

Existing Site Images



Mature woodland to the north of site.



Mature woodland to the north of site.

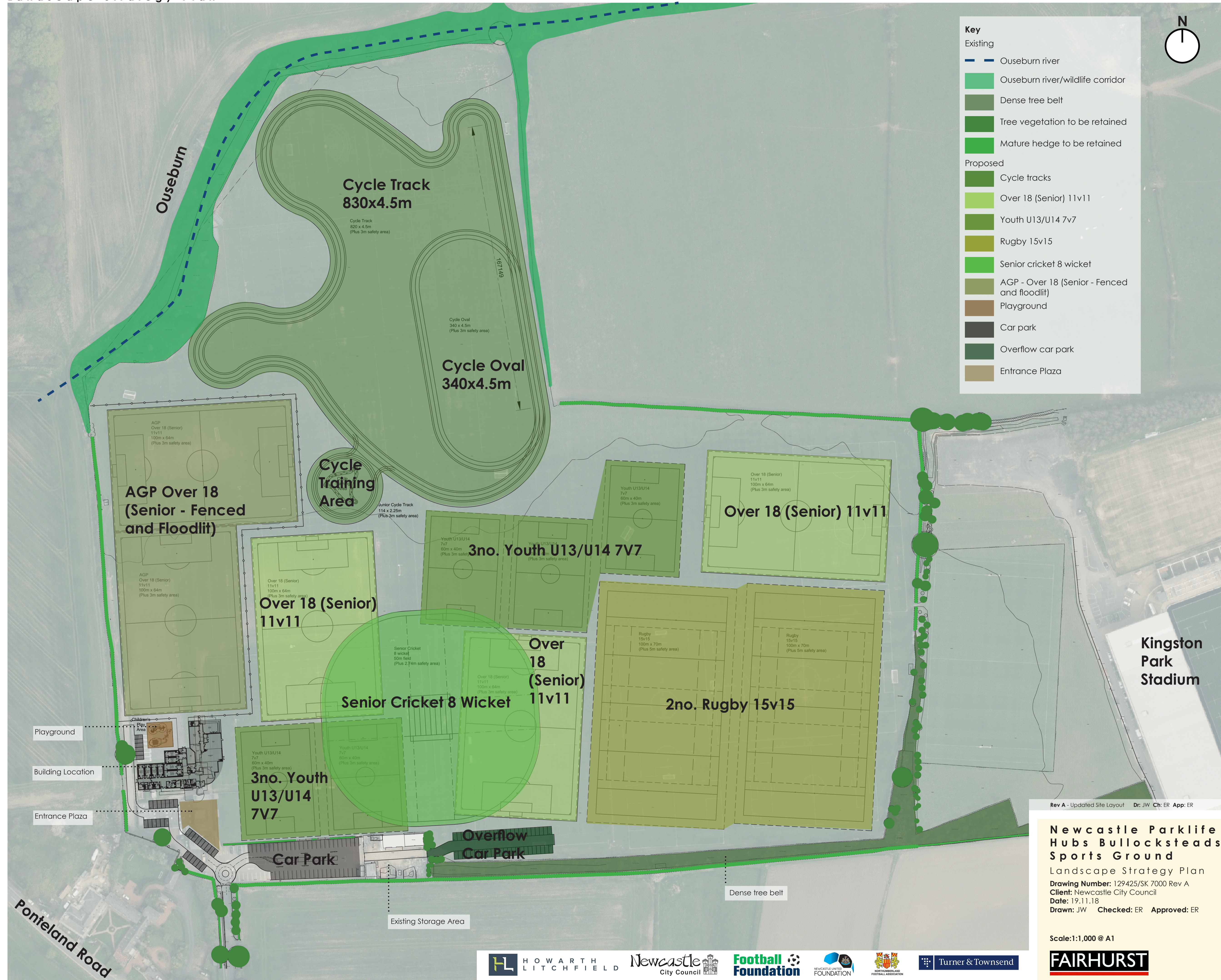


Mature hedgerow to car park.



Mature vegetation to southern and eastern boundary.

Landscape Strategy Plan



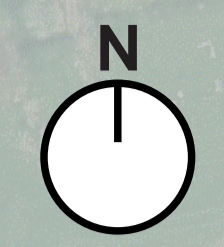
Key

Existing

- Ouseburn river
- Ouseburn river/wildlife corridor
- Dense tree belt
- Tree vegetation to be retained
- Mature hedge to be retained

Proposed

- Cycle tracks
- Over 18 (Senior) 11v11
- Youth U13/U14 7v7
- Rugby 15v15
- Senior cricket 8 wicket
- AGP - Over 18 (Senior - Fenced and floodlit)
- Playground
- Car park
- Overflow car park
- Entrance Plaza



Rev A - Updated Site Layout Dr: JW Ch: ER App: ER

Newcastle Parklife Hubs Bullocksteads Sports Ground
 Landscape Strategy Plan
 Drawing Number: 129425/SK 7000 Rev A
 Client: Newcastle City Council
 Date: 19.11.18
 Drawn: JW Checked: ER Approved: ER

Scale: 1:1,000 @ A1

